



6 Oaktree Close, Stockport, SK2 5DN

Nestled in the peaceful cul-de-sac of Oaktree Close, Offerton, this immaculate semi-detached home offers a blend of comfort and space, ideal for family living. With three well-proportioned bedrooms, this property provides ample space for both relaxation and functionality.

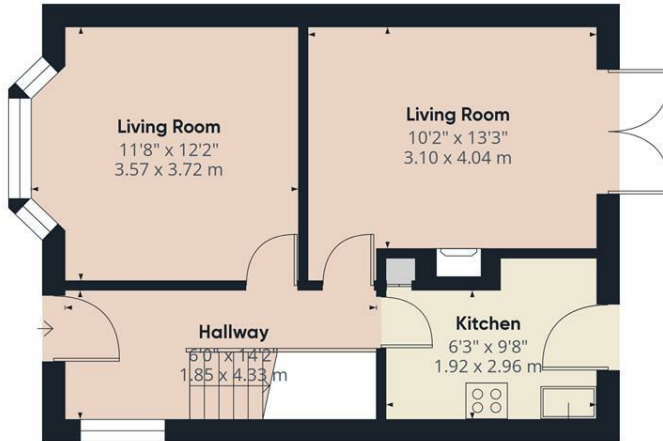
Upon entering, you are welcomed by a bright entrance hallway, leading to the first floor and the heart of the home. The spacious bay-fronted reception room offers views of the front. To the rear, a versatile second reception room offers the flexibility to be used as a dining area, playroom, or home office, adapting to your needs. The kitchen, located conveniently next to the rear reception room, is well-equipped with an array of eye-level and base units, with integrated fridge, freezer and washing machine.

Upstairs, you'll find three generously sized bedrooms, including two spacious double rooms, offering plenty of space for personal furnishings. The modern family bathroom, located on the first floor, is fitted with a bath and overhead shower, wash basin, and WC, providing everything needed for everyday convenience.

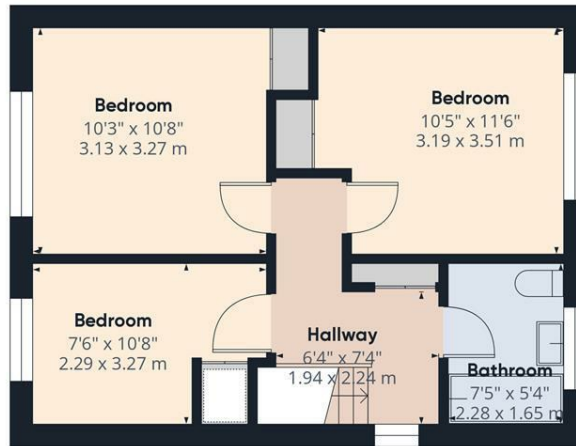
Externally, the property boasts a driveway with off-road parking for two vehicles. The rear garden is well-maintained, offering a peaceful outdoor space perfect for children to play, enjoying the sunshine, or hosting gatherings with

- Three Bedroom Semi Detached Home
- Immaculate Condition
- Driveway For Two Cars
- Popular Location
- Close To Great Local Schools
- Patio/Lawn Rear Garden

£280,000



Floor 0



Floor 1

Approximate total area¹⁾
853.78 ft²
79.32 m²

(1) Excluding balconies and terraces

While every attempt has been made to ensure accuracy, all measurements are approximate, not to scale. This floor plan is for illustrative purposes only.

Calculations are based on RICS IPMS 3C standard.

GIRAFFE360

