



14 Harleen Grove, Stockport, SK2 5DD

Harratts Property Services is pleased to present this well-maintained three-bedroom semi-detached home, situated in the highly sought-after cul-de-sac of Harleen Grove, Offerton. Offering spacious accommodation over two floors, a generous rear garden, and off-road parking, this property is an excellent opportunity for families or those looking to upsize in a popular residential area.

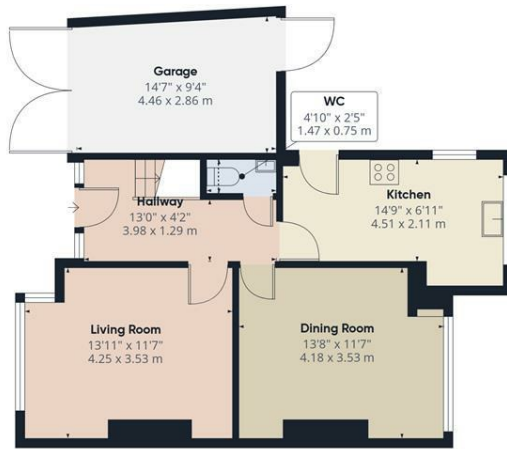
Upon entering the property, you are welcomed by a spacious entrance hallway leading to the first floor. To the front, a bright and inviting bay-fronted reception room enjoys pleasant views over the cul-de-sac. To the rear, a second reception room offers a versatile space—ideal for a dining area, family room, or home office. Adjacent to this is a well-appointed kitchen, fitted with a range of eye-level and base units, and providing ample space for appliances and storage. Completing the ground floor is a convenient downstairs W/C.

The first floor offers three well-proportioned bedrooms, including two spacious double rooms, all thoughtfully arranged to maximise comfort and practicality. The family bathroom is fitted with a walk-in shower, wash basin, and WC, providing a functional space for everyday use.

Externally, the property benefits from a private driveway offering off-road parking. To the rear, a well-maintained

- Three Bedroom Semi-Detached Property
- Two Spacious Double Bedrooms
- Two Reception Rooms
- Located On A Cul-De-Sac
- South Facing Rear Garden
- Off Road Parking

£325,000



Floor 0



Floor 1

HARRATTS
PROPERTY SERVICES

Approximate total area^m

1078 ft²
100.2 m²

Reduced headroom

2 ft²
0.2 m²

(1) Excluding balconies and terraces

Reduced headroom

Below 5 ft/1.5 m

While every attempt has been made to ensure accuracy, all measurements are approximate, not to scale. This floor plan is for illustrative purposes only.

Calculations are based on RICS IPMS 3C standard.

GIRAFFE360

