

9 Minsmere Walks, Stockport, SK2 5JT

Harratts Property Services is pleased to present this two-bedroom semi-detached home, perfectly positioned on Minsmere Walks within the highly sought-after Bosden Farm Estate in Offerton. This ready-to-move-into property offers an excellent location near Warren Wood Primary School and enjoys open field views.

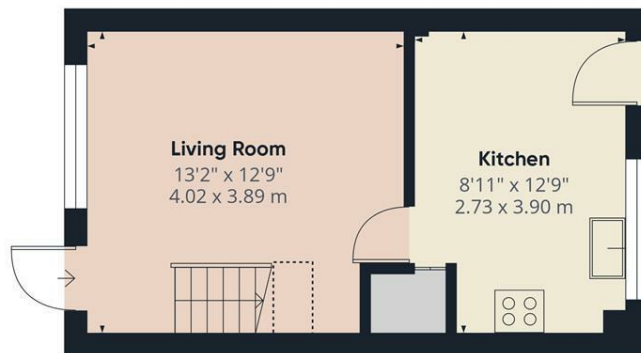
Upon entering, you're welcomed by an entrance porch that leads into a bright and inviting lounge. At the rear of the property, you'll find a modern kitchen/diner fitted with a range of eye-level and base units, offering ample space for both appliances and storage.

Upstairs features two generously sized double bedrooms and a well-appointed bathroom complete with a bath and overhead shower, wash basin, and low-level WC.

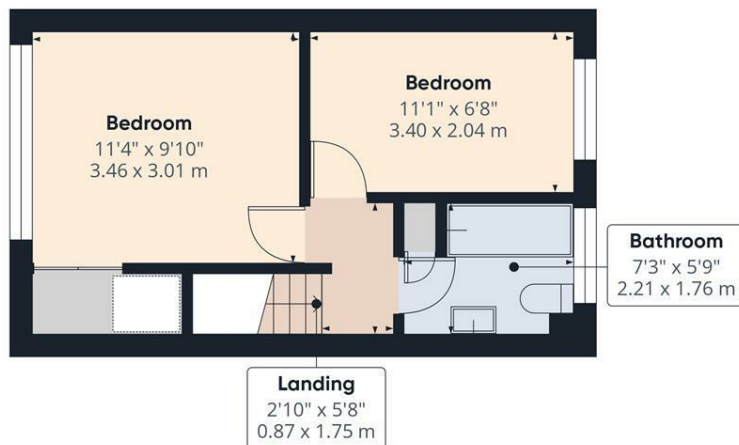
Externally, the property boasts a lawned front garden, while the rear garden is paved, offering low maintenance outdoor space and the option to park a vehicle.

- Popular Location On Bosden Farm
- Two Bedroom Semi Detached Home
- Close Proximity To Warren Wood Primary School
- Off Road Parking To Rear
- Ready To Move In Condition
- Great First Time buyer Or Investors

£210,000



Floor 0



Floor 1

Approximate total area⁽¹⁾

546 ft²
50.6 m²

Reduced headroom

5 ft²
0.4 m²

(1) Excluding balconies and terraces

Reduced headroom

Below 5 ft/1.5 m

While every attempt has been made to ensure accuracy, all measurements are approximate, not to scale. This floor plan is for illustrative purposes only.

Calculations are based on RICS IPMS 3C standard.

GIRAFFE360

