



15 Stream Terrace, Stockport, SK1 4AS

Harratts Property Services is delighted to present this well-maintained two-bedroom semi-detached home, ideally situated at the edge of the quiet Stream Terrace cul-de-sac. This ready-to-move-into property offers a superb location in Stockport, perfect for first-time buyers, downsizers, or investors alike.

Upon entering, you are welcomed by an entrance hallway leading to a bright and inviting lounge. To the rear, the property features a spacious kitchen/diner, fitted with a range of eye-level and base units, providing ample room for both storage and appliances.

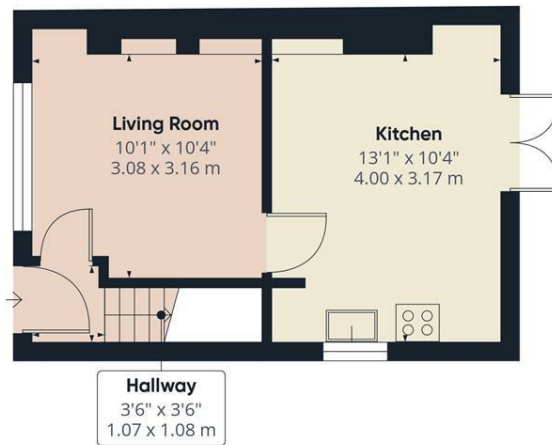
Upstairs, the home offers two generously sized bedrooms, along with a well-appointed bathroom comprising a bath with overhead shower, wash basin, and low-level WC.

Externally, the property benefits from off-road parking to the front, while the rear garden features a mix of stone patio and lawned areas, ideal for outdoor relaxation or entertaining.

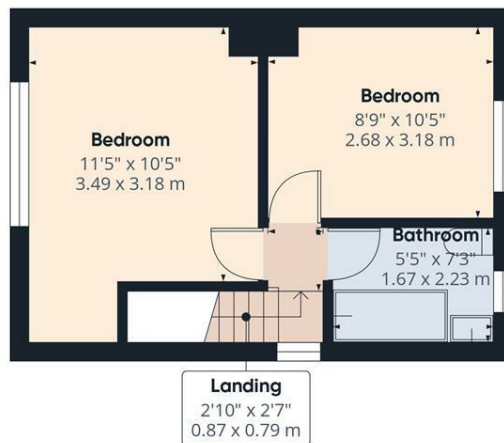
Early viewing is highly recommended to fully appreciate all this charming home has to offer.

- Two Bedroom Semi Detached Property
- Cul-De-Sac Location
- Off Road Parking
- Garden To Rear
- Ready To Move Into
- Close To Local Amenities

£200,000



Floor 0



Floor 1

Approximate total area^m
552 ft²
51.3 m²

(1) Excluding balconies and terraces

While every attempt has been made to ensure accuracy, all measurements are approximate, not to scale. This floor plan is for illustrative purposes only.

Calculations are based on RICS IPMS 3C standard.

GIRAFFE360

