



## 16 Yew Tree Drive, Bredbury, SK6 2HJ

Harratts Property Services is delighted to present this charming two-bedroom semi-detached bungalow, offering space both inside and out—ideal for comfortable, single-level living.

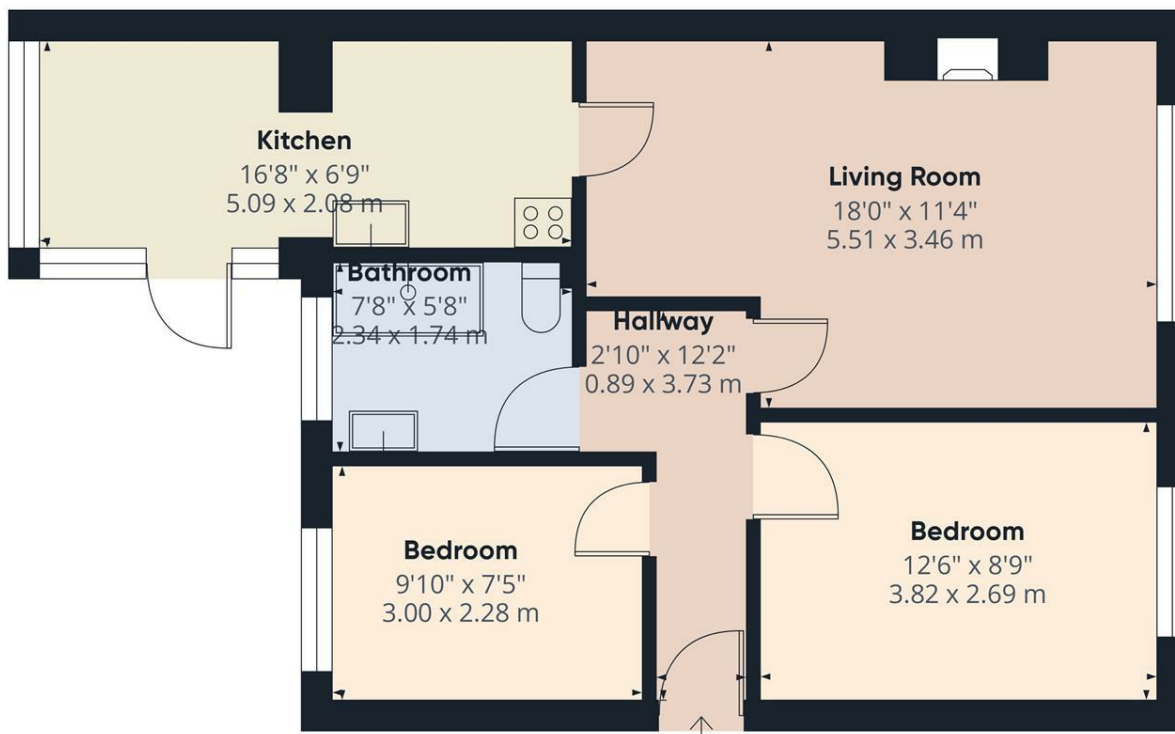
Externally, the property benefits from a well-maintained rear patio garden, perfect for outdoor relaxation. A private driveway provides off-road parking and leads to a detached garage, offering excellent additional storage.

Internally, the accommodation comprises a lounge with views to the front, two well-proportioned bedrooms, and a fitted kitchen equipped with a range of base and wall units, ensuring ample storage and workspace. A well-appointed shower room completes the layout, delivering practicality and comfort throughout.

For further information or to arrange a viewing of this lovely home, please contact our office at your earliest convenience.

- \*\*\* NO CHAIN \*\*\*
- Off Road Parking
- Rear Patio Garden
- Two Bedroom Semi-Detached Bungalow
- Detached Garage
- Popular location

**£250,000**



Approximate total area<sup>m</sup>  
577 ft<sup>2</sup>  
53.7 m<sup>2</sup>

(1) Excluding balconies and terraces

Calculations reference the RICS IPMS 3C standard. Measurements are approximate and not to scale. This floor plan is intended for illustration only.

GIRAFFE360

