



35 Heathside Road, Stockport, SK3 0SW

Harratts Property Services is delighted to bring to market this charming two-bedroom semi-detached home, ideally situated on the ever-popular Heathside Road in Stockport.

Perfectly suited to first-time buyers, young families, or those looking to downsize, this well-presented property offers comfortable living space and excellent potential in a highly sought-after location.

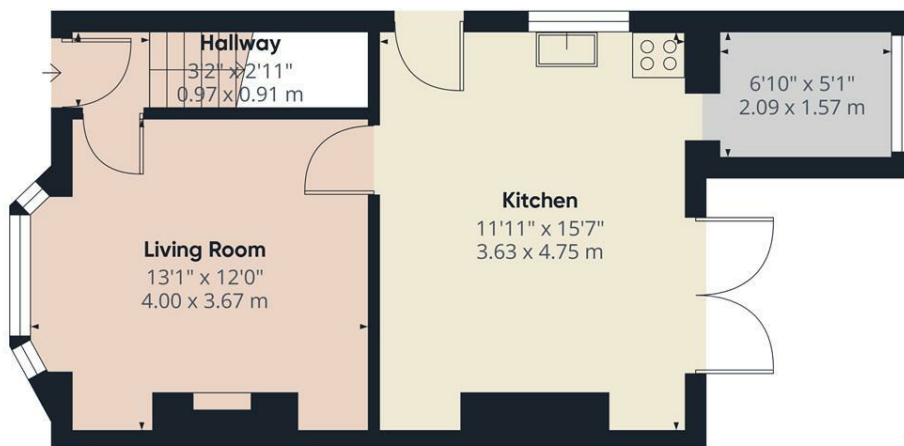
Upon entering the home, you are welcomed by the entrance hallway providing access to the first floor and lounge featuring a bay window. To the rear, the open-plan kitchen/diner is fitted with a range of modern eye-level and base units, offering ample storage and space for everyday dining, off the kitchen is a utility space.

Upstairs, the property boasts two generously sized double bedrooms along with a family bathroom complete with a bath and overhead shower, wash basin, and WC.

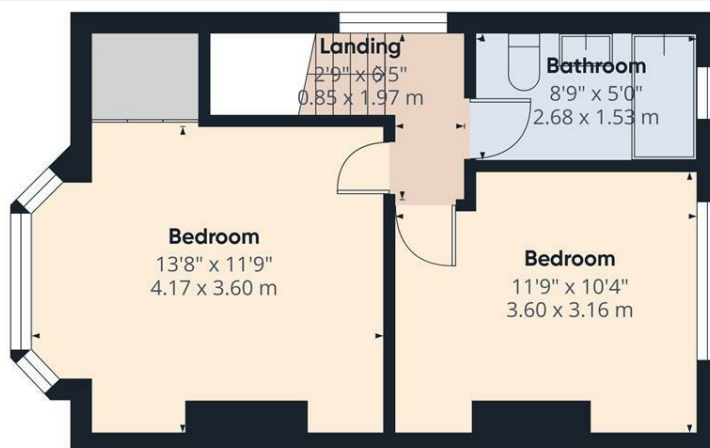
Externally, the home benefits from a driveway providing off-road parking and a private rear garden, ideal for relaxing or entertaining during the warmer months.

- Two Bedroom Semi-Detached Property
- Open-Plan Kitchen/Diner
- Garden To Rear
- Off Road Parking
- Popular Location
- Close To Local Schools

£290,000



Floor 0



Floor 1

HARRATTS
PROPERTY SERVICES

Approximate total area^m
742 ft²
68.9 m²

(1) Excluding balconies and terraces

Calculations reference the RICS IPMS 3C standard. Measurements are approximate and not to scale. This floor plan is intended for illustration only.

GIRAFFE360

Energy Efficiency Rating		
	Current	Potential
Very energy efficient - lower running costs		
(92 plus) A		
(81-91) B		
(69-80) C		
(55-68) D		
(39-54) E		
(21-38) F		
(1-20) G		
Not energy efficient - higher running costs		
England & Wales		
EU Directive 2002/91/EC		

Environmental Impact (CO ₂) Rating		
	Current	Potential
Very environmentally friendly - lower CO ₂ emissions		
(92 plus) A		
(81-91) B		
(69-80) C		
(55-68) D		
(39-54) E		
(21-38) F		
(1-20) G		
Not environmentally friendly - higher CO ₂ emissions		
England & Wales		
EU Directive 2002/91/EC		