



125 Mile End Lane, Stockport, SK2 6BY

Harratts Property Services is delighted to present this extended three-bedroom semi-detached home in the highly sought-after area of Mile End, Stockport.

This stunning property has undergone a major transformation under the current owners, offering stylish and spacious accommodation throughout.

Ground Floor:

The front of the property boasts a generous reception room, perfect for relaxing and unwinding. Off the hallway, you'll find a modern downstairs W/C and a handy utility room.

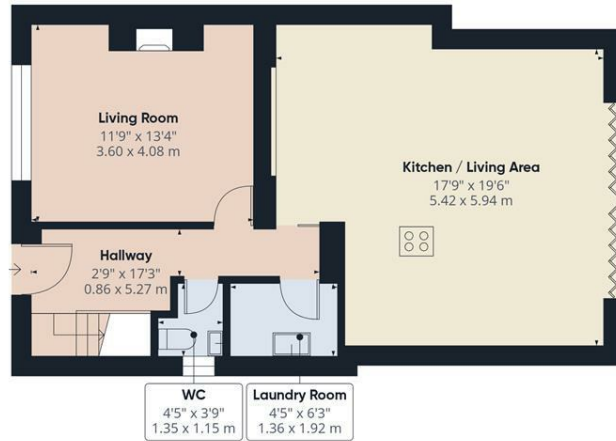
The true highlight of this home is the exceptional open-plan kitchen and dining area, complete with contemporary fittings and bi-folding doors that open onto a beautifully landscaped rear garden, creating an ideal space for entertaining and family living.

First Floor:

Upstairs, the property offers two spacious double bedrooms and a well-proportioned single bedroom. The luxurious family bathroom features a freestanding bath and a walk-in shower, finished to a high standard.

- Extended Three Bedroom Semi Detached Home
- Open Plan Kitchen Dining Room
- Downstairs Modern W/c
- Utility Room
- Beautiful Brand New Bathroom
- Outstanding Rear garden

£350,000



Floor 0



Floor 1

Approximate total area^m
1043 ft²
96.9 m²

(1) Excluding balconies and terraces

Calculations reference the RICS IPMS 3C standard. Measurements are approximate and not to scale. This floor plan is intended for illustration only.

GIRAFFE360

