

## 21 Worrall Street, Stockport, SK3 9BE

Harratts Property Services are pleased to present this immaculately presented two-bedroom terraced property, ideally located on the sought-after Worrall Street in Stockport. This beautifully refurbished home offers a seamless blend of period charm and contemporary style, making it an ideal purchase for professionals, first-time buyers, or investors seeking a property in a prime location.

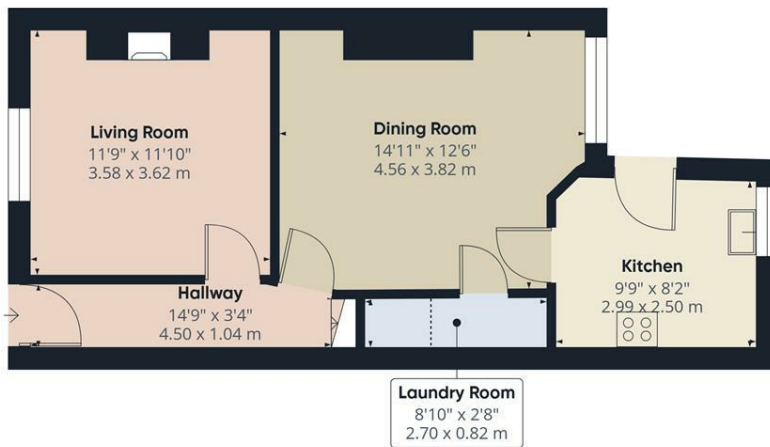
The property comprises a welcoming entrance hallway that leads into a beautifully presented lounge, thoughtfully decorated and featuring a range of attractive period and modern touches. The hallway also provides access to a bright and generously sized dining room, which benefits from access to a utility space with plumbing for a washing machine and potential to be converted into a downstairs WC, subject to the necessary consents. The dining room flows through to a modern, stylishly fitted kitchen, complete with a range of contemporary wall and base units.

To the first floor, the property offers two generously proportioned double bedrooms. Completing the accommodation is a contemporary family bathroom, fitted with a bath with shower over, washbasin, and low-level WC.

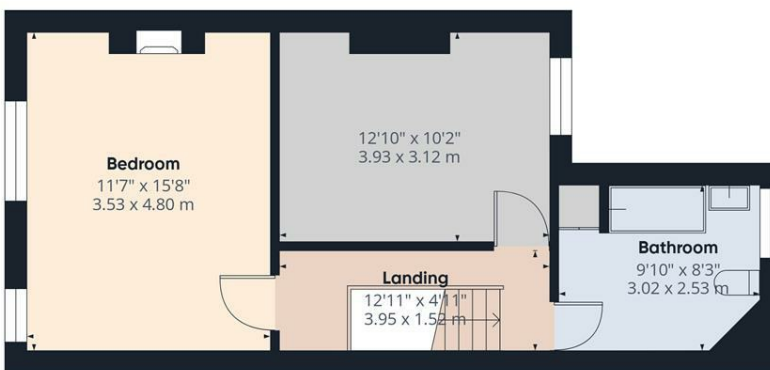
Externally the property benefits from a good-sized, low-maintenance rear patio garden — perfect for outdoor dining or relaxation.

- Two Double Bedroom Mid-Terrace Property
- Free Resident Permit Parking
- Two Reception Rooms
- Beautifully Decorated Throughout
- Ready To Move Into
- Patio Garden To Rear
- Storage In Rear Garden
- Sought-After Location
- Short Walk To Stockport Train Station
- Close To Motorway Links

**£240,000**



Floor 0



Floor 1



**Approximate total area<sup>(1)</sup>**  
889 ft<sup>2</sup>  
82.6 m<sup>2</sup>

**Reduced headroom**  
8 ft<sup>2</sup>  
0.8 m<sup>2</sup>

(1) Excluding balconies and terraces

Reduced headroom  
..... Below 5 ft/1.5 m

Calculations reference the RICS IPMS 3C standard. Measurements are approximate and not to scale. This floor plan is intended for illustration only.

GIRAFFE360

