



11 Tragan Drive, Stockport, SK2 5QX

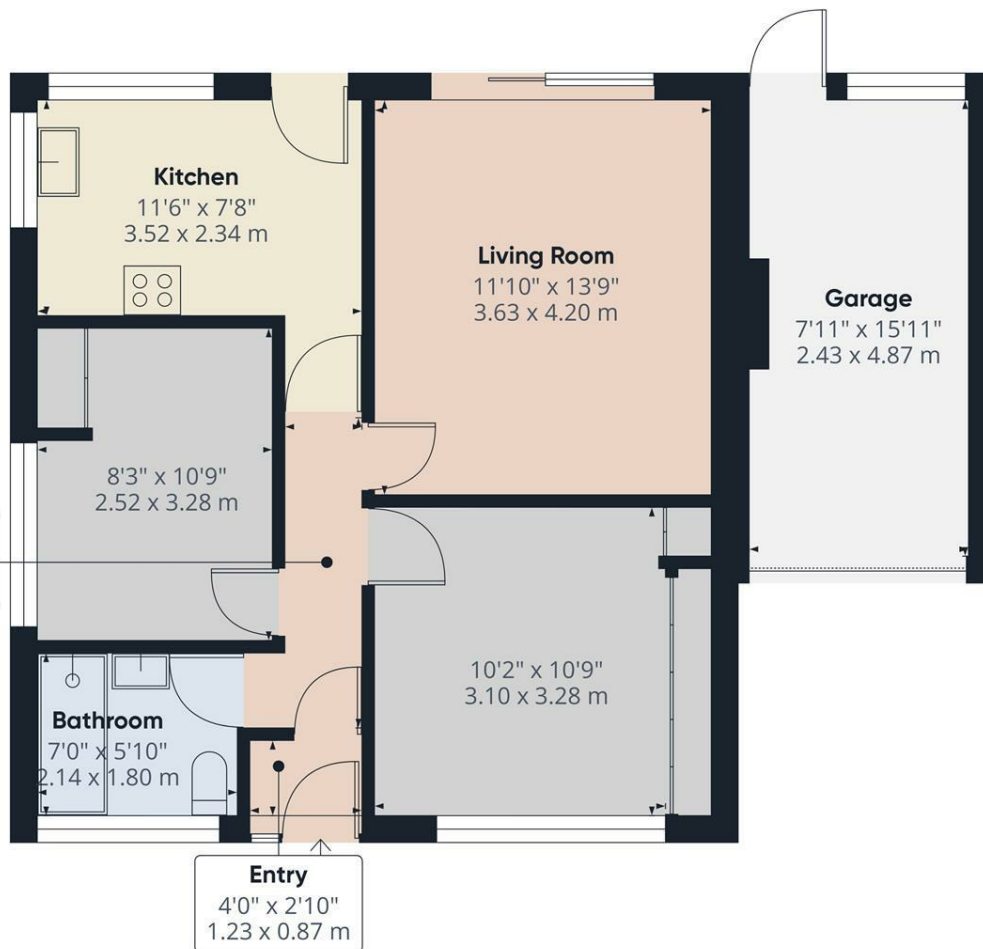
Harratts Property Services is proud to present this well-maintained and chain-free two-bedroom detached bungalow, ideally positioned in a peaceful and highly sought-after residential area. Offering generous living space and excellent outdoor areas, this delightful home is perfect for those seeking comfortable and convenient single-level living.

Internally, the property features a thoughtfully arranged layout comprising two well-proportioned double bedrooms, a bright and spacious lounge with views over the rear garden, a fully fitted kitchen with ample storage, and a modern, recently updated shower room. Each room is presented in good condition, allowing for immediate occupation or scope to personalise.

Externally, the bungalow benefits from maintained gardens to both the front and rear — ideal for those who enjoy outdoor space without the demands of excessive upkeep. A private driveway provides off-road parking and leads to an attached garage, useful additional storage.

- *****NO CHAIN*****
- **Two Bedroom Detached Bungalow**
- **Popular Location**
- **South Facing Rear Garden**
- **Driveway And Garage**
- **Virtual Tour Upon Request**

£280,000



Approximate total area^m
704 ft²
65.5 m²

(1) Excluding balconies and terraces

Calculations reference the RICS IPMS 3C standard. Measurements are approximate and not to scale. This floor plan is intended for illustration only.

GIRAFFE360

Energy Efficiency Rating		Current	Potential
Very energy efficient - lower running costs			
(92 plus) A			
(81-91) B			
(69-80) C			
(55-68) D			
(39-54) E			
(21-38) F			
(1-20) G			
Not energy efficient - higher running costs			
England & Wales		EU Directive 2002/91/EC	

Environmental Impact (CO ₂) Rating		Current	Potential
Very environmentally friendly - lower CO ₂ emissions			
(92 plus) A			
(81-91) B			
(69-80) C			
(55-68) D			
(39-54) E			
(21-38) F			
(1-20) G			
Not environmentally friendly - higher CO ₂ emissions			
England & Wales		EU Directive 2002/91/EC	