



## 8 Aldersgate Road, Stockport, SK2 6DE

This beautifully presented home offers stylish accommodation throughout, featuring an extended kitchen/family room, four bedrooms (three of which are generous doubles), and a wonderfully sized rear garden—just a few of the many reasons this property deserves your attention. Ideally positioned in the highly sought-after Mile End area, it provides convenient access to local amenities and transport links.

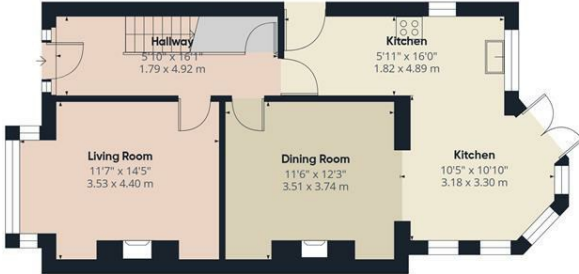
The ground floor comprises a welcoming entrance hall, a well-proportioned lounge, and a modern fitted kitchen which opens seamlessly into a spacious family room and an adjoining dining room. To the first floor are three bedrooms and a contemporary family bathroom, while the second floor hosts an impressive master bedroom of excellent proportions.

Outside, the property benefits from a small front garden and a tarmac driveway extending along the side of the home, leading to a timber gate and an additional tarmac area beyond.

The rear garden is a particular highlight—beautifully arranged and overlooking a tranquil pond area with abundant greenery and wildlife. The main garden is attractively landscaped, laid to lawn, and bordered by mature planting. A generous decked terrace provides the perfect spot for outdoor dining, while a further patio area sits to the rear. The garden is enclosed by low-level wooden fencing, offering both charm and privacy.

- Four Bedroom Family Home
- Popular Residential Area
- Great Sized Rear Garden With Amazing Views
- Front Garden And Driveway
- Close To Great Local Schools
- Viewing Highly Recommended

**£375,000**



Floor 0



Floor 1



Floor 2



Approximate total area<sup>1)</sup>  
1171 ft<sup>2</sup>  
108.8 m<sup>2</sup>

Reduced headroom  
4 ft<sup>2</sup>  
0.4 m<sup>2</sup>

(1) Excluding balconies and terraces

Reduced headroom  
Below 5 ft/1.5 m

Calculations reference the RICS IPMS 3C standard. Measurements are approximate and not to scale. This floor plan is intended for illustration only.

GIRAFFE360

