



136 Turncroft Lane, Stockport, SK1 4AR

Harratts presents this well presented two-bedroom end-terrace property, ideally located on the popular Turncroft Road in Stockport. Perfect for first-time buyers or investors alike.

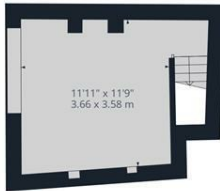
The accommodation begins with a welcoming entrance hallway leading into a bright, bay-fronted lounge. To the rear is an open-plan kitchen/diner, fitted with a range of base and eye-level units and offering space for appliances, with direct access to the rear garden. The property also benefits from a useful cellar, providing additional storage.

To the first floor are two well proportioned double bedrooms, alongside a bathroom fitted with a bath with shower over, washbasin and WC.

Externally, the property enjoys a south-facing rear garden with patio area, ideal for outdoor seating and entertaining.

- *** NO CHAIN ***
- Two Double Bedrooms
- Open Plan Kitchen Diner
- Cellar Perfect For Extra Storage
- South Facing Rear Garden
- Great Location Near Woodbank Park

£210,000



Floor -1



Floor 0

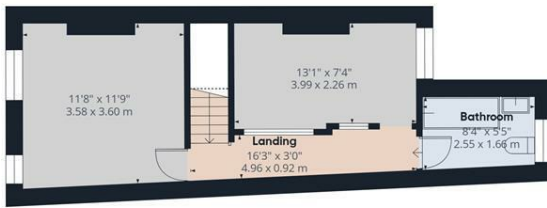
Approximate total area[®]
846 ft²
78.6 m²

(1) Excluding balconies and terraces

Reduced headroom
Below 5 ft/1.5 m

Calculations reference the RICS IPMS 3C standard. Measurements are approximate and not to scale. This floor plan is intended for illustration only.

GIRAFFE360



Floor 1

