



68 Micklehurst Green, Stockport, SK2 5NU

This charming three-bedroom end-terrace home, located in the popular area of Micklehurst Green, is perfectly suited to first-time buyers or growing families. Situated within the highly sought-after area of Offerton, the property offers generous living accommodation, excellent transport links, and close proximity to reputable schools and a range of local amenities.

Upon entering the property, you are welcomed by an entrance hallway with stairs leading to the first floor. The spacious lounge enjoys pleasant views over the front aspect, creating a comfortable and inviting living area. To the rear is a modern open-plan kitchen/diner, fitted with a range of eye-level and base units providing ample storage and practicality. Completing the ground floor is a convenient utility room located just beyond the kitchen.

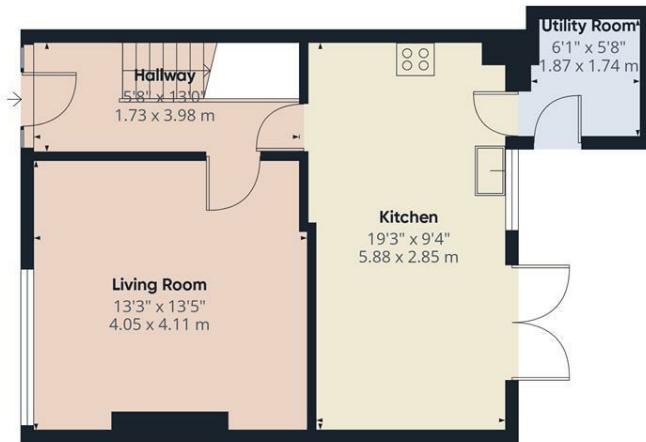
To the first floor are three generously proportioned bedrooms, including two spacious double rooms. The family bathroom is fitted with a bath with shower over, hand wash basin, and low-level WC.

Externally, the property benefits from a private, low-maintenance garden to the rear, ideal for outdoor dining and entertaining. To the front is a lawned garden providing an additional outdoor space to enjoy.

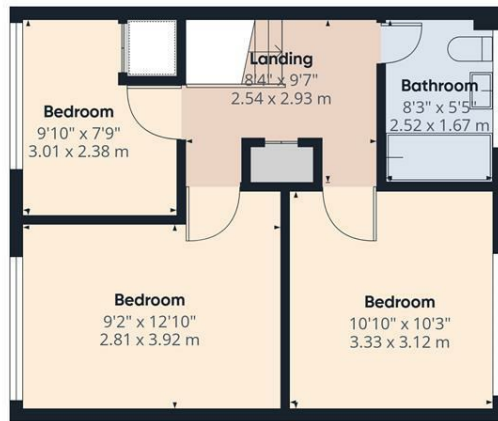
This is a fantastic opportunity to acquire a well-presented home in a desirable residential location, offering both comfort and convenience.

- Three Bedroom End-Terrace Property
- Ready To Move Into
- Spacious Rooms Throughout
- Open Plan Kitchen/Diner
- Utility Room
- Popular Location

£220,000



Floor 0



Floor 1



Approximate total area^m
895 ft²
83.2 m²

(1) Excluding balconies and terraces

Calculations reference the RICS IPMS 3C standard. Measurements are approximate and not to scale. This floor plan is intended for illustration only.

GIRAFFE360

