



64 Hall Street, Stockport, SK1 4DE

Harratts are delighted to bring to market this well-presented ground floor apartment, ideally situated in the popular Offerton area of Stockport. Offering generous and well-proportioned accommodation throughout, this property would make an excellent purchase for first-time buyers, downsizers, or investors alike.

The apartment features two spacious double bedrooms along with a bright and airy lounge, providing comfortable living space for modern day living. The property also benefits from off-road parking to the rear, with a tarmacked forecourt offering added convenience.

Ideally positioned for easy access to Stockport Town Centre, the property is well served by excellent public transport links, while the nearby M60 motorway network provides straightforward commuting across Greater Manchester.

Offerton itself offers a wide range of local amenities including shops, schools, and transport connections, making this a highly convenient and desirable residential location.

Early viewing is highly recommended. Contact Harratts today to arrange your appointment.

- ***** NO CHAIN *****
- **Two Bedroom Ground Floor Apartment**
- **Private Parking**
- **Great First Time Home Or Investment**
- **Popular Location**
- **Close To Great Transport Links**

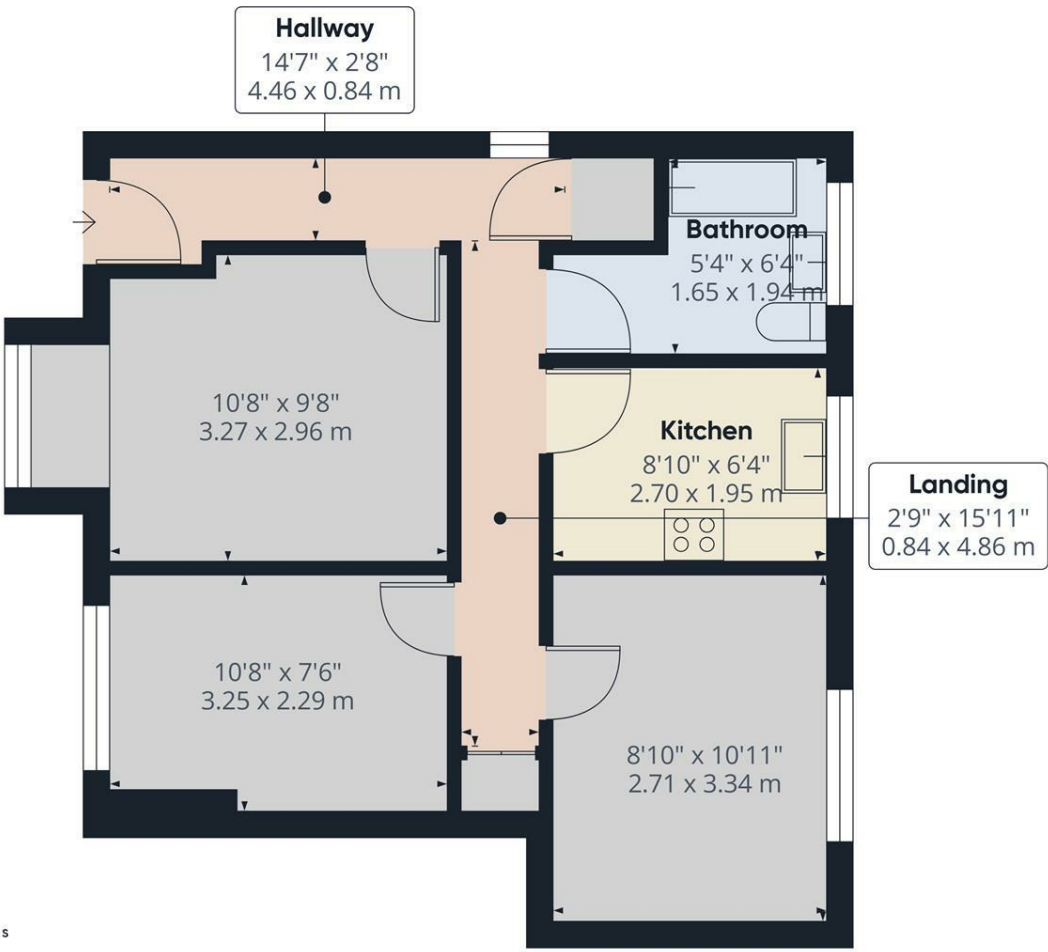
£162,000

Approximate total area^m
495 ft²
46 m²

(1) Excluding balconies and terraces

Calculations reference the RICS IPMS 3C standard. Measurements are approximate and not to scale. This floor plan is intended for illustration only.

GIRAFFE360



Energy Efficiency Rating		Current	Potential
Very energy efficient - lower running costs			
(92 plus) A			
(81-91) B			
(69-80) C			
(55-68) D			
(39-54) E			
(21-38) F			
(1-20) G			
Not energy efficient - higher running costs			
		74	
England & Wales		EU Directive 2002/91/EC	

Environmental Impact (CO ₂) Rating		Current	Potential
Very environmentally friendly - lower CO ₂ emissions			
(92 plus) A			
(81-91) B			
(69-80) C			
(55-68) D			
(39-54) E			
(21-38) F			
(1-20) G			
Not environmentally friendly - higher CO ₂ emissions			
England & Wales		EU Directive 2002/91/EC	