



124 Forbes Road, Stockport, SK1 4HN

Located on Forbes Road in Stockport, this well-presented two-bedroom semi-detached property is ideal for first-time buyers, young families, or those looking to downsize. Ready to move into, the home is situated in a highly sought-after residential location.

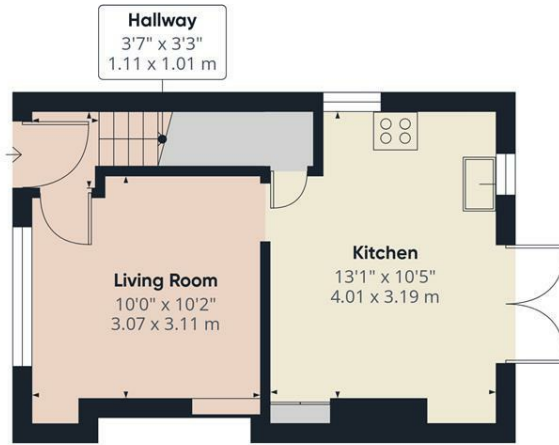
Upon entering, you are welcomed by an entrance hallway with stairs leading to the first floor and access to the lounge, which enjoys views to the front aspect. To the rear of the property is a kitchen/diner, fitted with eye-level and base units and offering space for essential appliances. Double doors provide access to the rear garden, creating an excellent space for both everyday living and entertaining.

The first floor comprises two well-proportioned double bedrooms and a family bathroom fitted with a bath and shower over, wash basin, and WC.

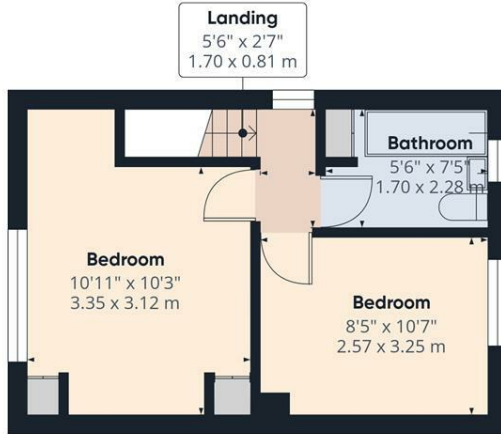
Externally, the property benefits from a garden to the front and an impressive rear garden of generous proportions, featuring both a patio and lawn area, providing the perfect space for outdoor relaxation, and entertaining.

- Two Bedroom Semi Detached Home
- Large Rear Garden
- Great First Home
- Popular Location
- Close To Great Local Parks
- Excellent Transport Links Close By

£230,000



Floor 0



Floor 1

Approximate total area^m
551 ft²
51.3 m²

(1) Excluding balconies and terraces

Calculations reference the RICS IPMS 3C standard. Measurements are approximate and not to scale. This floor plan is intended for illustration only.

GIRAFFE360



Energy Efficiency Rating		Current	Potential
Very energy efficient - lower running costs			
(92 plus) A			
(81-91) B			
(69-80) C			
(55-68) D			
(39-54) E			
(21-38) F			
(1-20) G			
Not energy efficient - higher running costs			
England & Wales	EU Directive 2002/91/EC		

Environmental Impact (CO ₂) Rating		Current	Potential
Very environmentally friendly - lower CO ₂ emissions			
(92 plus) A			
(81-91) B			
(69-80) C			
(55-68) D			
(39-54) E			
(21-38) F			
(1-20) G			
Not environmentally friendly - higher CO ₂ emissions			
England & Wales	EU Directive 2002/91/EC		