



6 Montagu Road, Stockport, SK2 5DA

Located on the desirable Montagu Road in Stockport, this charming three-bedroom semi-detached home occupies a generous corner plot and is offered for sale with no onward chain. Combining spacious living accommodation with excellent potential for personalisation, this property is ideal for those looking to create a forever home.

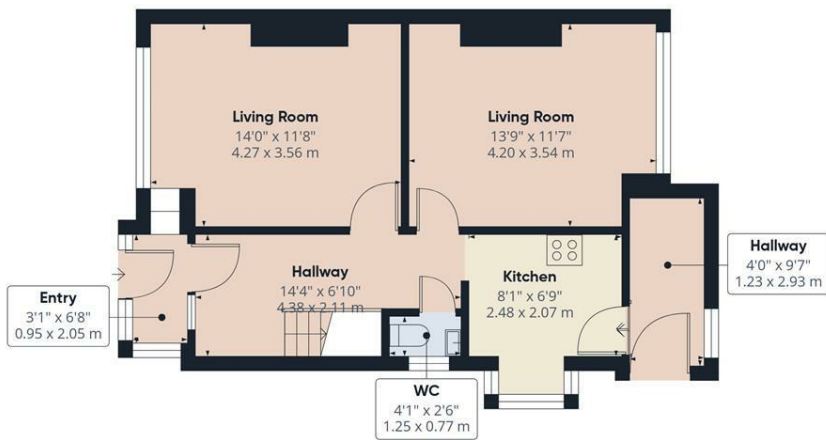
From the porch, you are welcomed into an entrance hallway giving access to the main living areas, along with a convenient downstairs WC. The bright and spacious front reception room features a bay window, filling the space with natural light. To the rear, a second reception room provides a versatile space, perfect for dining, relaxing, or entertaining, with views over the rear garden. The adjoining kitchen is fitted with a range of eye-level and base units, offering ample storage.

Upstairs, the property comprises three well-proportioned bedrooms, including two generous doubles, along with a family bathroom featuring a shower cubicle and wash basin, plus a separate WC for added convenience.

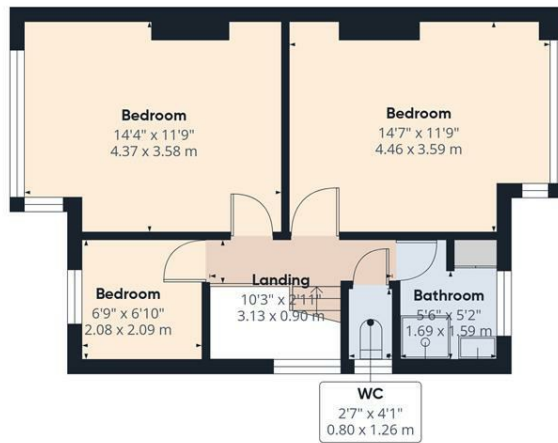
Externally, the home benefits from off-road parking to the rear, a generous rear garden, and a large detached garage providing excellent additional storage.

- ***** NO CHAIN *****
- **Three Bedroom Semi Detached Property**
- **Generous Corner Plot**
- **Two Reception Rooms**
- **Off Road Parking**
- **Detached Garage To The Rear**
- **Popular Location**
- **Close To Great Local Schools**

£325,000



Approximate total area^m
979 ft²
91.1 m²



(1) Excluding balconies and terraces

Calculations reference the RICS IPMS 3C standard. Measurements are approximate and not to scale. This floor plan is intended for illustration only.

GIRAFFE360

